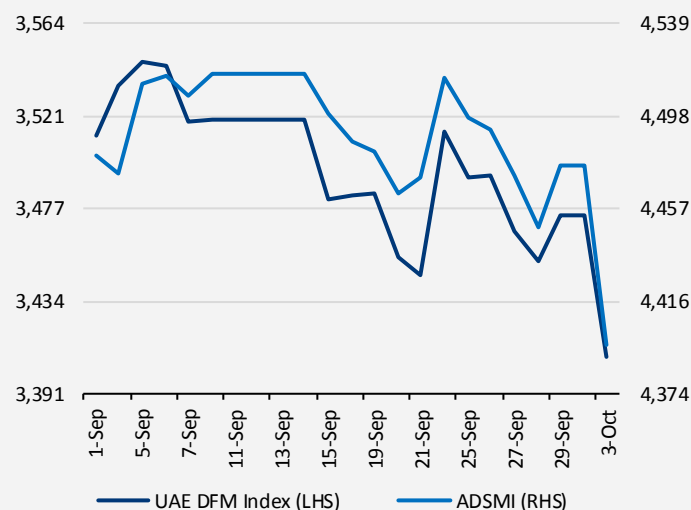


GCC MarketWatch

	Last Close	1D Chg	1D % Chg	YTD% Chg	1M % Chg	1Y % Chg	P/E Multiple (x)
Abu Dhabi Securities Market General	4396.37	↓ -79.95	-1.79%	2.07%	-1.70%	-2.68%	11.70
UAE DFM Index	3408.06	↓ -66.32	-1.91%	8.16%	-3.60%	-5.18%	12.20
Bloomberg GCC 200 Index	57.14	↓ -1.17	-2.01%	-8.63%	-5.55%	-13.89%	13.25
Bahrain BSE index	1144.64	↓ -5.36	-0.47%	-5.86%	0.31%	-9.97%	9.56
Kuwait KSE Index	5358.53	↓ -39.86	-0.74%	-4.57%	-0.69%	-6.12%	18.48
Saudi Arabia TASI	5416.47	↓ -31.73	-0.58%	-21.63%	-11.19%	-26.51%	12.86
Oman MSM30 Index	5674.70	- 0.00	0.00%	4.97%	-0.93%	-2.20%	10.65
Qatar DSM Index	10309.92	↓ -93.46	-0.90%	-1.15%	-4.98%	-10.46%	14.43

UAE Indices



UAE Market Commentary

- UAE equity markets ended in the negative territory yesterday, amid losses in insurance sector stocks.
- Insurance companies, Al Khazna Insurance, Abu Dhabi National Insurance and Islamic Arab Insurance dropped 7.7%, 4.6% and 2.7%, respectively. National Corp for Tourism & Hotels and National Marine Dredging plunged 9.9% and 7.8%, respectively. Real estate stocks, Aldar Properties and Emaar Properties lost 4.1% and 2.8%, respectively. On the brighter side, Abu Dhabi National Energy jumped 7.4%, tracking gains in crude oil prices.
- Meanwhile, in an encouraging update, the UAE topped the GCC in the Global Islamic Economy Indicator (GIEI), an index signifying the overall health and growth of the Islamic economy across 73 countries.
- The Abu Dhabi Securities Exchange (ADX) general index ended 1.8% lower at 4,396.37, while the Dubai Financial Market (DFM) index ended 1.9% lower at 3,408.06.

Upcoming UAE Economic Events This Week

Release Date	Event	Month	Survey	Actual	Prior	Revised	Relevance
2-Oct-16	M1 Money Supply MoM	Aug	-	0.70%	-2.30%	-	High
2-Oct-16	M2 Money Supply MoM	Aug	-	-0.60%	0.90%	-	Medium
2-Oct-16	M3 Money Supply MoM	Aug	-	-0.50%	0.00%	-	Medium
3-Oct-16	Dubai Airport Cargo Volume YoY	Aug	-	-3.10%	-1.20%	-	Low
2 Oct - 7 Oct	CPI YoY	Aug	-	-	1.76%	-	High
2 Oct - 7 Oct	CPI MoM	Aug	-	-	0.29%	-	High
5-Oct-16	Emirates NBD UAE PMI	Sep	-	-	54.7	-	Medium
11-Oct-16	Dubai Economy Tracker SA	Sep	-	-	55.7	-	Low

Company Events This Week

Dubai		
Date	Company	Event
-	-	-

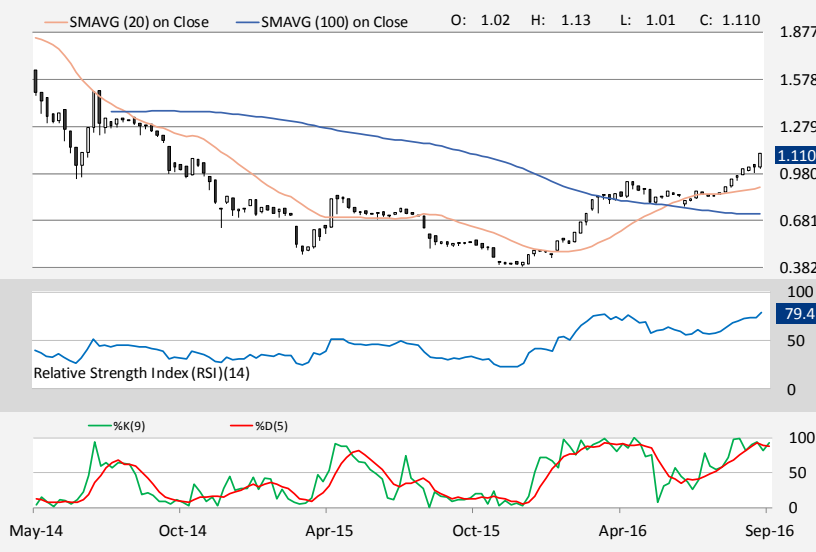
Abu Dhabi		
Date	Company	Event
-	-	-

Abu Dhabi National Energy Company



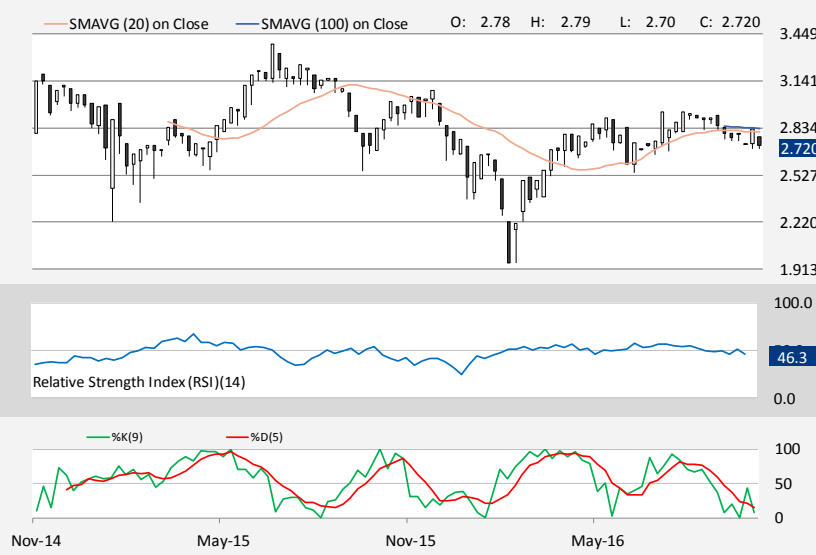
- The stock advanced for the second straight session yesterday and formed a long bullish candlestick to close above the daily upper Bollinger band (currently placed at AED0.56) at AED0.58.
- As clearly visible on the daily chart, momentum oscillators are tranquil at a higher level above their midlines, hinting at the presence of bullish momentum in the coming session. Likewise, weekly momentum oscillators are trading with a strong bias, further endorsing the bullish stance.
- Key resistance is situated at the AED0.59 level, followed by the AED0.62 and AED0.65 levels. A clear break and stability above the latter might lead to further upside momentum in the stock. However, an upper Bollinger band crossover on the daily chart indicates that the stock might witness some correction in the near term. Key support is placed at the 100day SMA (currently trading at AED0.54), followed by the AED0.52 and AED0.48 levels.

Gulf Finance House



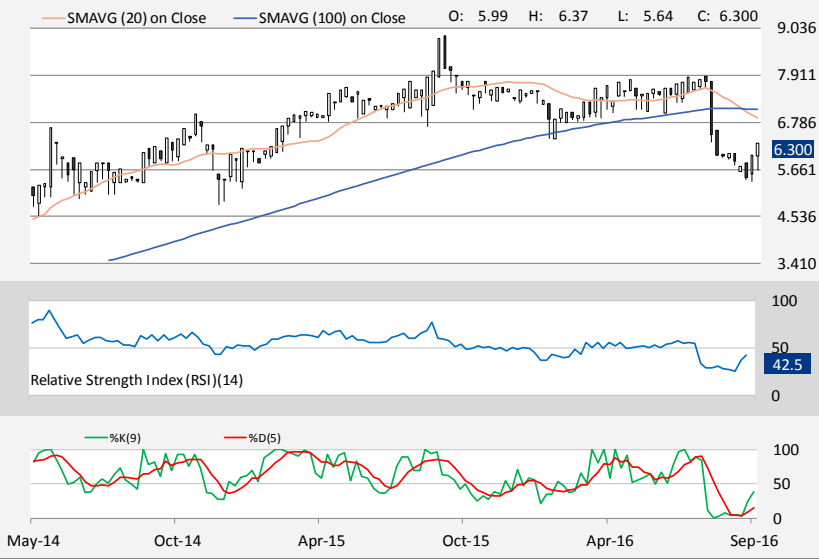
- After forming a hanging man candlestick pattern on the daily chart on 29 September, the stock traded lower in the last session to end at AED1.07.
- On the daily chart, the MACD and RSI indicators are moving downwards, reflecting a weak technical outlook. As of now, the weekly RSI and stochastic indicators are showing loss of upward potential, further validating the above view.
- Key near term support is located at the 20day SMA (currently trading at AED1.02), followed by the AED0.98 and daily lower Bollinger band (currently placed at AED0.95) levels. A breach below the latter might lead to further bearish momentum in the stock.
- On the contrary, key intraday resistance is placed at the daily upper Bollinger band (currently trading at AED1.10) and AED1.13 levels. A break above the latter might lead to strength in the stock.

Emaar Malls Group



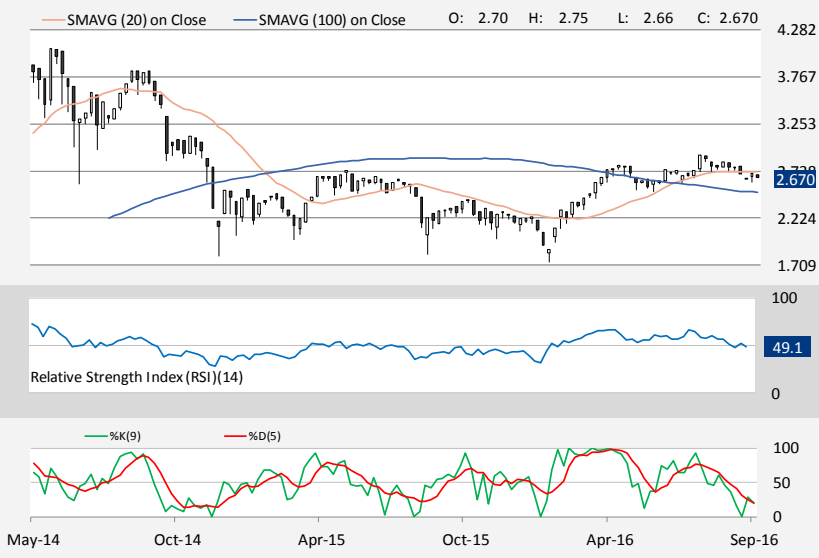
- Yesterday, the stock formed a long bearish candlestick on the daily chart and settled below the daily lower Bollinger band (currently placed at AED2.67) at AED2.63.
- A recent signal line crossover from above by the daily MACD along with the RSI and stochastic indicators pointing south, hints at negative momentum in the short term. On the weekly chart, momentum oscillators are trading with a bearish showing, further confirming the above stance.
- Crucial support resides at the AED2.61 level, followed by the AED2.56/2.54 and crucial AED2.50 levels. A move back below the latter might lead to increased selling pressure on the stock.
- However, a lower Bollinger band crossover on the daily chart suggests that the stock is likely to witness some recovery in the short term. Important resistance is placed at the AED2.72 level, followed by the 20day SMA (currently trading at AED2.76) and AED2.79 levels.

AGTHIA Group



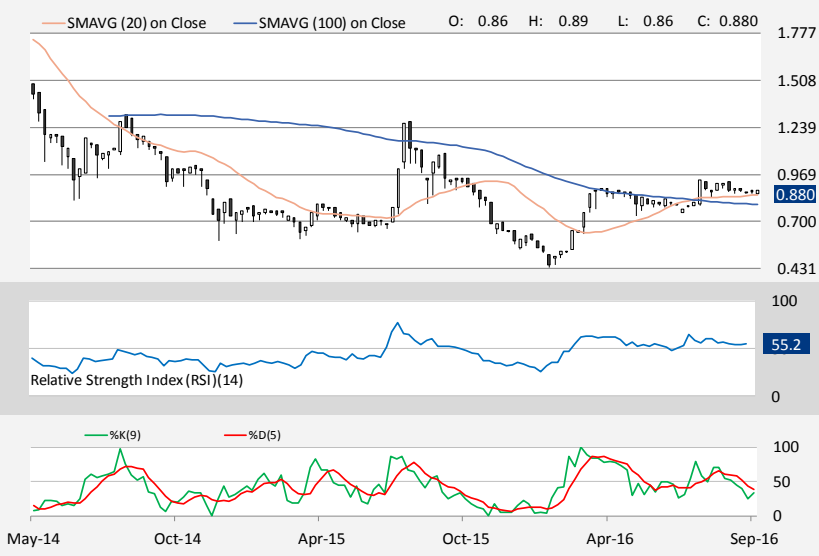
- The stock traded with a bearish tone in the previous session and finished at AED6.01.
- As of now, the daily MACD is trading water in the negative region coupled with the RSI and stochastic indicators showing loss of upward potential, reflecting at a bearish technical picture. Similarly, the weekly momentum oscillators are trading with a negative bias, further supporting the above view.
- Key support to be watched is located at the 20day SMA (currently trading at AED5.87), followed by the next ones at the AED5.64/5.62 and daily lower Bollinger band (currently placed at AED5.38) levels. A clear breach below the latter might generate further downside momentum in the stock. On the flipside, key technical barrier is placed at the AED6.07/6.10 level, followed by the AED6.25 and 50day SMA (currently placed at AED6.37) levels. A break above the latter might turn the main trend to bullish.

Aldar Properties



- The stock formed a long bearish candlestick on the daily chart yesterday and closed below the 200day SMA (currently trading at AED2.59) at AED2.56.
- At present, daily MACD is heading lower coupled with the RSI and stochastic indicators trading near their oversold territories, hinting at the presence of weak momentum in the coming session. Weekly momentum oscillators are trading with a weak bias, further affirming the bearish potential.
- Important intraday support is situated at the AED2.51 level, followed by the AED2.45 and AED2.40 levels. A move back below the latter might trigger further weakness in the stock. However, a lower Bollinger band crossover on the daily chart indicates at potential recovery in the stock in the near term. Key technical obstacle resides at the AED2.66 level, followed by the 20day SMA (currently placed at AED2.71) and AED2.75 levels.

Methaq Takaful Insurance Co

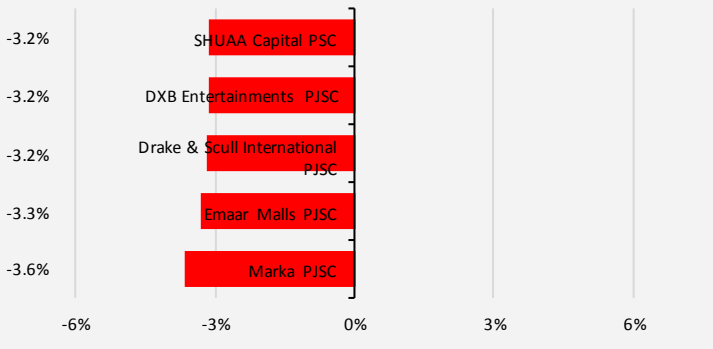


- The stock traded in the red in the prior session and ended at AED0.85.
- On the daily chart, the MACD and RSI are pointing south while the stochastic indicator is tranquil near its oversold region, reflects at a bearish technical scenario. As visible on the weekly chart, momentum oscillators are trading with a slight negative tone, further supporting the above view.
- Key support is located at the AED0.84 level, a breach below which might lead to bearish pressure on the stock, paving way for the AED0.79 and 200day SMA (currently trading at AED0.77) levels as the next possible supports.
- On the other hand, crucial resistance is placed at the AED0.87 level, followed by the 50day SMA (currently trading at AED0.89) and daily upper Bollinger band (currently placed at AED0.91) levels. A break above the latter might lead to positivity in the stock.



Dubai

Top Gainers & Losers



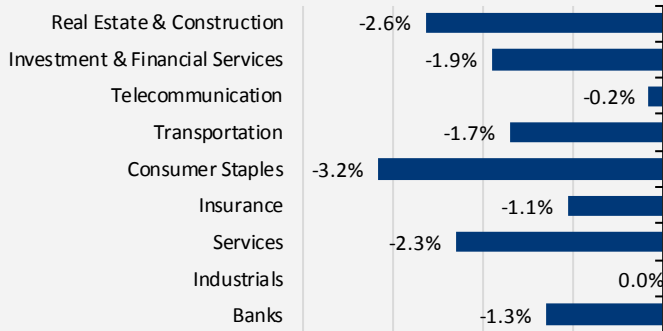
Top Volume

Company	Volume
Drake & Scull International PJSC	29,320,926
Arabtec Holding PJSC	22,956,398
Dubai Parks & Resorts PJSC	21,278,249
Union Properties PJSC	11,424,349
Emaar Properties PJSC	8,658,023

Volume Gainers

Company	Volume Gainers (%)
Dar Al Takaful PJSC	332%
Islamic Arab Insurance Co	194%
Air Arabia PJSC	87%
Dubai Investments PJSC	84%
Amlak Finance PJSC	82%

Sector Performance



Market Overview

	3-Oct-16	29-Sep-16	Change	% Change
Index (Last)	3408.1	3474.4	-66.3	-1.9%
Volume (000's)	189806.0	310271.0	-120465.0	-38.8%
Deals	3362.0	3549.0	-187.0	-5.3%
Value (mill)	279.2	438.5	-159.3	-36.3%
Company Traded	32.0	35.0	-3.0	-8.6%
Gainers	1.0	17.0	-16.0	-94.1%
Laggards	30.0	9.0	21.0	233.3%
No Change	1.0	9.0	-8.0	-88.9%

52 Week High

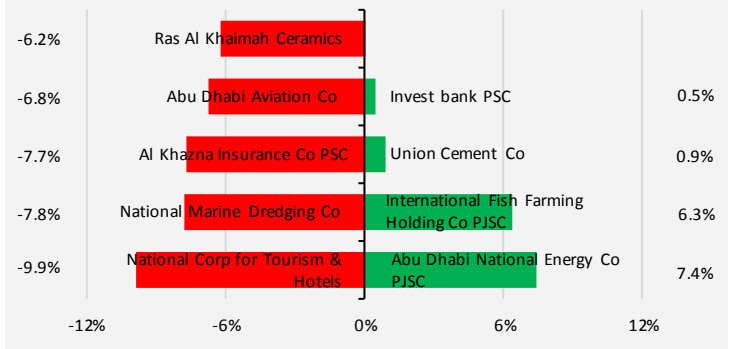
3723.8

52 Week Low

2590.7

Abu Dhabi

Top Gainers & Losers



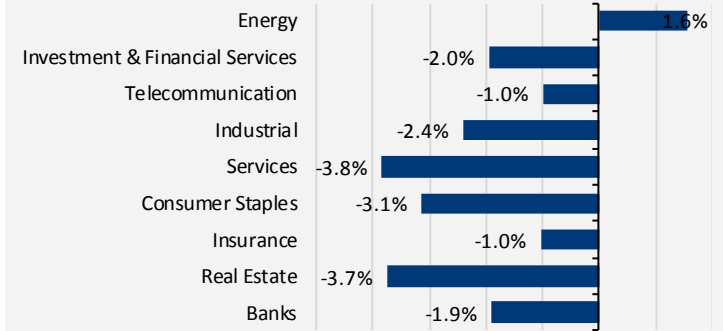
Top Volume

Company	Volume
Eshraq Properties Co PJSC	61,992,673
Aldar Properties PJSC	15,789,621
Abu Dhabi National Energy Co PJSC	14,524,336
Dana Gas PJSC	4,218,522
First Gulf Bank PJSC	2,240,391

Volume Gainers

Company	Volume Gainers (%)
Union Cement Co	826%
Agthia Group PJSC	518%
Al Khazna Insurance Co PSC	250%
Arkan Building Materials Co	167%
Abu Dhabi Islamic Bank PJSC	79%

Sector Performance



Market Overview

	3-Oct-16	29-Sep-16	Change	% Change
Index (Last)	4396.4	4476.3	-79.9	-1.8%
Volume (000's)	115466.0	206252.0	-90786.0	-44.0%
Deals	1519.0	2202.0	-683.0	-31.0%
Value (mill)	192.5	371.7	-179.2	-48.2%
Company Traded	36.0	27.0	9.0	33.3%
Gainers	4.0	16.0	-12.0	-75.0%
Laggards	20.0	7.0	13.0	185.7%
No Change	12.0	4.0	8.0	200.0%

52 Week High

4637.2

52 Week Low

3731.6

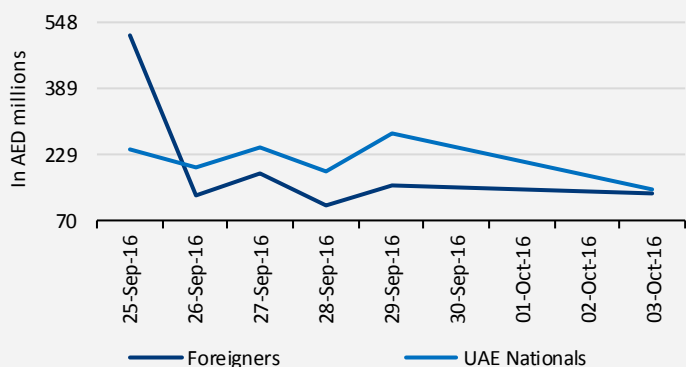
Abu Dhabi Foreign Ownership Limit

Company Name	Allow Foreign Ownership	Allowed For Foreigners	Current Foreigner Share
NBAD OneShare MSCI UAE ETF	Yes	100.00%	41.68%
Al Buhaira Insurance	Yes	25.00%	11.07%
AD Aviation	No	0.00%	0.00%
AD Commercial Bank	Yes	49.00%	13.09%
Emirate of Abu Dhabi	No	0.00%	0.00%
AD Islamic Bank	No	0.00%	0.00%
ADIB Right Issue Shares 2015	No	0.00%	0.00%
AD National Hotels	Yes	25.00%	1.06%
AD National Insurance	Yes	25.00%	0.20%
AD Ship Building	Yes	25.00%	0.69%
Fujairah National Insurance	No	0.00%	0.00%
AGTHIA GROUP PJSC	Yes	25.00%	13.59%
Al Khazna Insurance	Yes	25.00%	2.90%
Al Ain Al Ahlia Insurance	No	0.00%	0.00%
ALDAR Properties	Yes	40.00%	23.75%
Arkan Building Materials	No	0.00%	0.00%
International Fish Farming	Yes	49.00%	0.43%
Al Wathba Insurance	No	0.00%	0.00%
Green Crescent Insurance	Yes	25.00%	24.41%
AD for Building & M	Yes	25.00%	4.80%
Bank of Sharjah	Yes	30.00%	21.31%
Commercial Bank International	Yes	49.00%	48.89%
Dana Gas	Yes	49.00%	59.76%
Al Dhafra Insurance	No	0.00%	0.00%
Emirates Driving	No	0.00%	0.00%
Emirates Insurance	Yes	0.00%	0.07%
Eshraq properties Co.	Yes	49.00%	32.59%
Etisalat	Yes	20.00%	5.06%
Fujairah Building Industries	No	0.00%	0.00%
Fujairah Cement	Yes	0.00%	8.79%
First Gulf Bank	Yes	25.00%	15.48%
Finance House	Yes	20.00%	11.16%
Foodco Holding	No	-	0.82%
Gulf Cement	Yes	49.00%	18.52%
Gulf Medical Projects	Yes	49.00%	7.97%
Insurance House P.S.C	Yes	25.00%	0.37%

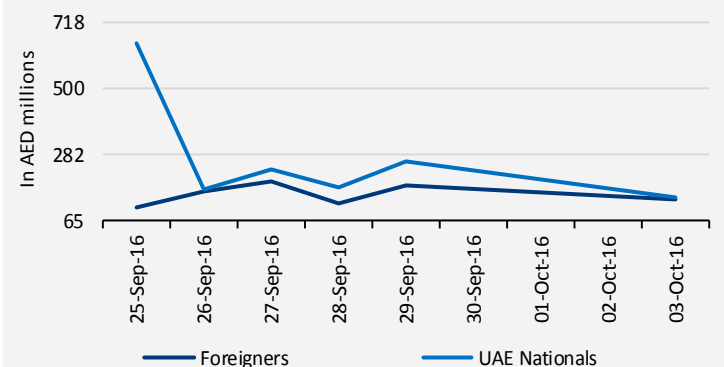
Company Name	Allow Foreign Ownership	Allowed For Foreigners	Current Foreigner Share
Invest Bank	Yes	20.00%	1.63%
Gulf Pharmaceutical	Yes	49.00%	34.25%
Gulf Livestock Company	Yes	49.00%	67.11%
MANZEL Real Estate	Yes	-	24.18%
Methaq Takaful Insurance	Yes	25.00%	23.55%
National Bank of AD	Yes	25.00%	5.00%
NBAD Convertible Notes	Yes	100.00%	0.00%
National Bank of Fujairah	No	0.00%	0.00%
National Bank of Um Al-Qaiwain	No	0.00%	0.00%
National for Tourism & Hotels	No	0.00%	0.00%
National Marine Dredging	Yes	5.00%	1.28%
Oman & Emirates Holding	Yes	0.00%	0.02%
Ooredoo	Yes	100.00%	87.57%
Umm Al-Qaiwain Cement	Yes	49.00%	7.47%
National Bank of RAK	Yes	40.00%	17.83%
RAK Cement	Yes	49.00%	28.52%
RAK Ceramic	Yes	49.00%	55.43%
RAK National Insurance	Yes	25.00%	0.00%
RAK Properties	Yes	49.00%	32.55%
RAK White Cement	Yes	49.00%	18.68%
RAK Poultry & Feeding	Yes	14.00%	15.91%
Sharjah Cement	Yes	15.00%	1.18%
Sharjah Group Company	Yes	49.00%	20.74%
Sharjah Islamic Bank	Yes	0.00%	20.21%
Sharjah Insurance	Yes	0.00%	0.00%
Sudatel	Yes	100.00%	80.49%
AD National Energy	No	0.00%	0.00%
AD National Takaful	No	0.00%	0.00%
The National Investor company	No	0.00%	0.00%
United Arab Bank	Yes	49.00%	47.23%
Union Cement	Yes	49.00%	2.98%
United Insurance	Yes	25.00%	0.00%
Union National Bank	Yes	40.00%	12.48%
Union Insurance	Yes	25.00%	0.31%
Waha Capital PJSC	Yes	49.00%	11.10%
National Takaful Company	Yes	25.00%	11.87%

Dubai Foreign/Domestic Market Activity

Value of Stocks Bought



Value of Stocks Sold





Disclaimer

All opinions, news, analysis, prices or other information contained in this report are provided as general market commentary and does not constitute investment advice, nor a solicitation or recommendation for you to buy or sell any over-the-counter product or other instrument.

Daman Securities, its employees and its independent third party provider make no representation as to the accuracy or completeness of this report. This report should therefore not be relied on as accurate or complete. The facts and opinions on this report are subject to change without notice. Daman Securities, its employees and its independent third party provider have no obligation to modify or update this report in the event that any information on this report becomes inaccurate.

Shares Risk Warning

The value of stocks and shares, and the income from them, can fall as well as rise and you may not get back the full amount you originally invested. Past performance is not necessarily a guide to future performance.